

# Shimadzu LCMS-029 Report

## Sample Information

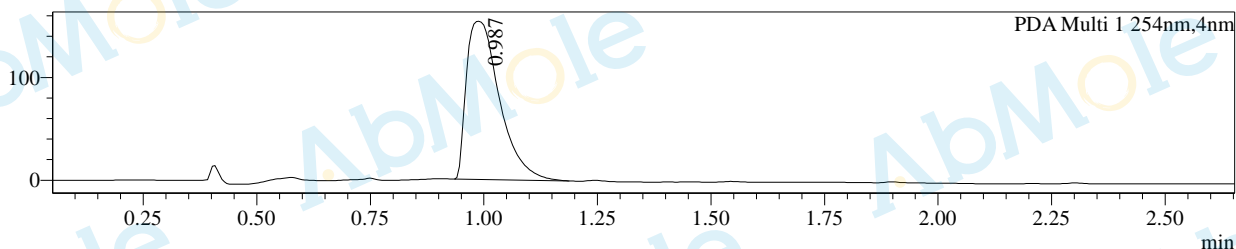
### LCMS

Acquired by : System Administrator Date Acquired : 2021/8/21 10:37:12  
 Sample Name : M3372-Clonidine hydrochloride-01 injection Volume : 15  
 Method File : B 5%-95%-P-new - 2.6min.lcm Vial : 72

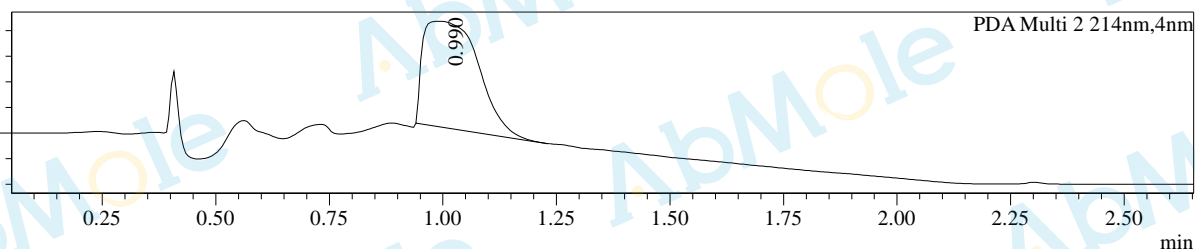
Column : Waters SunFire C18 50\*4.6mm 5um 2.000ml/min 2.6min  
 Pump A : 0.1% FA and 10% ACN in H2O  
 Pump B : 0.1% FA and 10% H2O in ACN

## Chromatogram

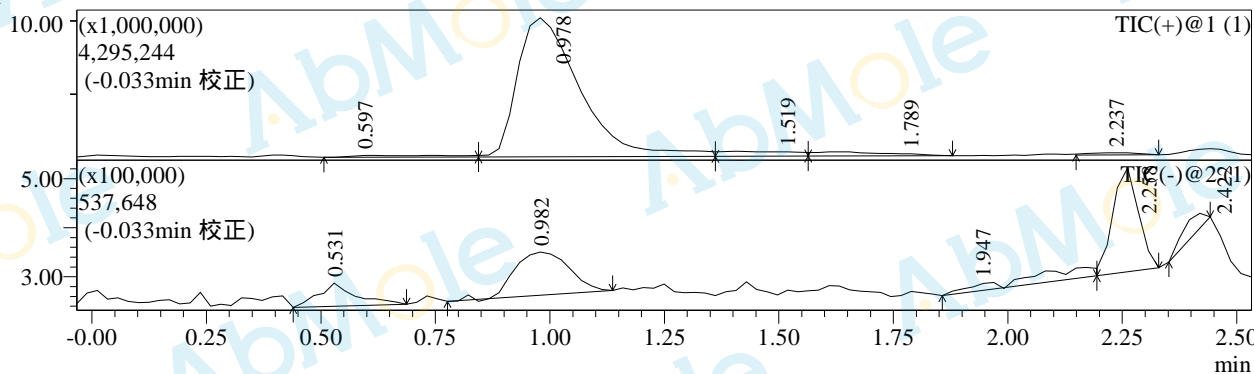
mAU



mAU



段号1



## Integration Results for DAD

### PDA Ch1 254nm

Peak#	Ret. Time	Height	Area	Area%
1	0.987	153948	780787	100.000
总计		153948	780787	100.000

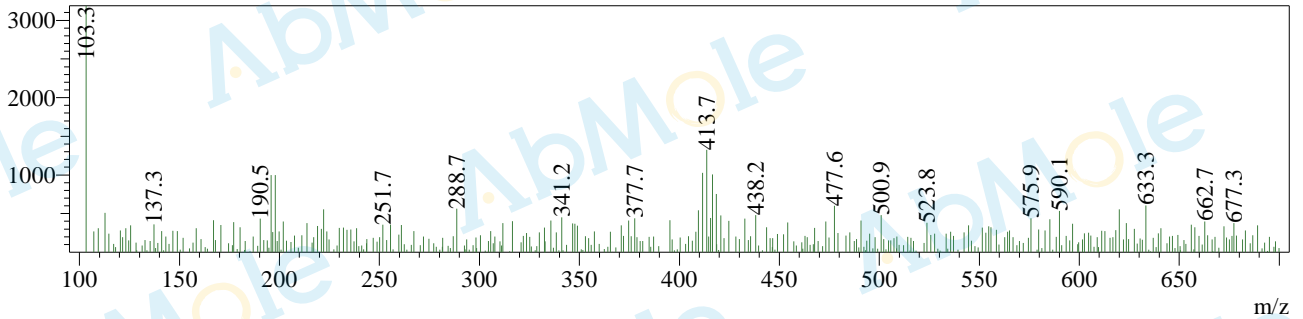
### PDA Ch2 214nm

Peak#	Ret. Time	Height	Area	Area%
1	0.990	2056458	17505609	100.000

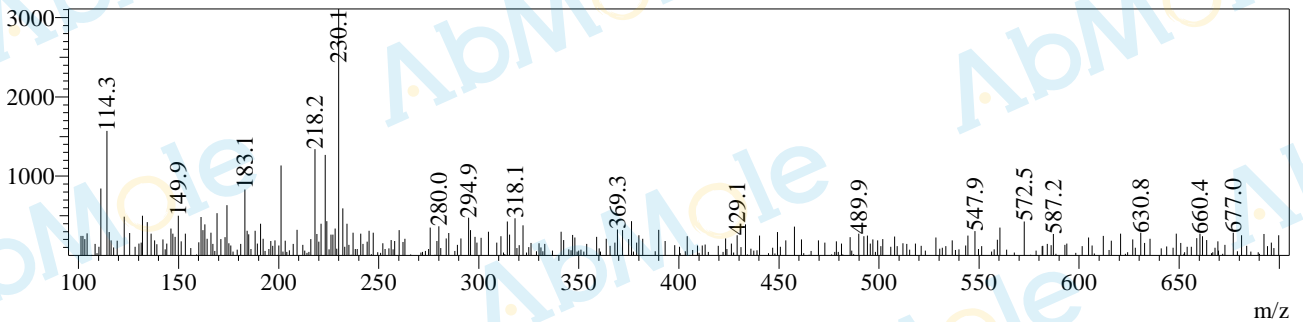
Peak#	Ret. Time	Height	Area	Area%
总计		2056458	17505609	100.000

### Mass Spectrum

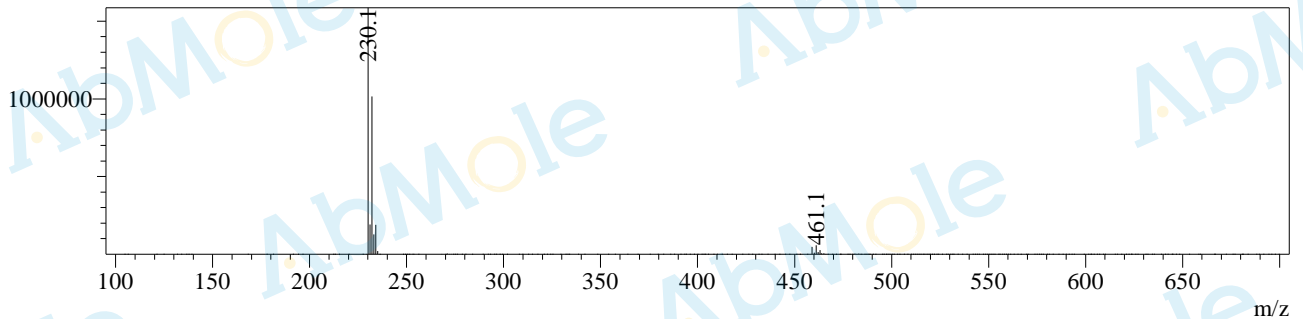
Rt=0.535min 负



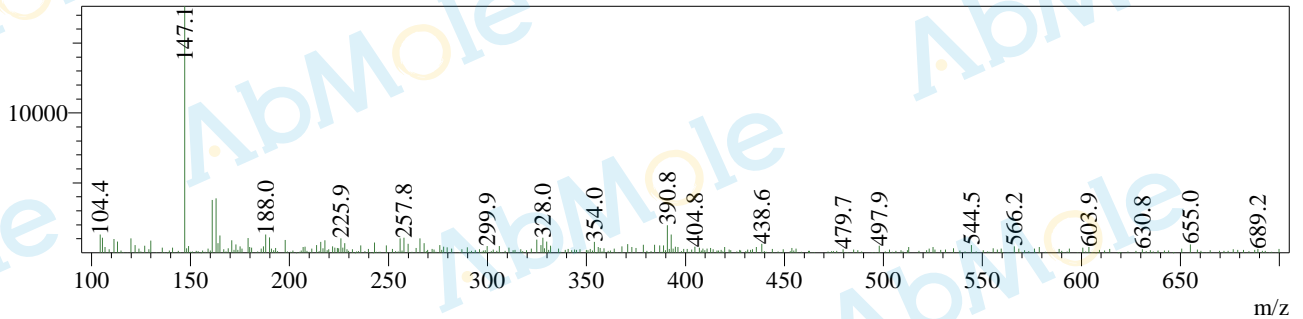
Rt=0.597min 正



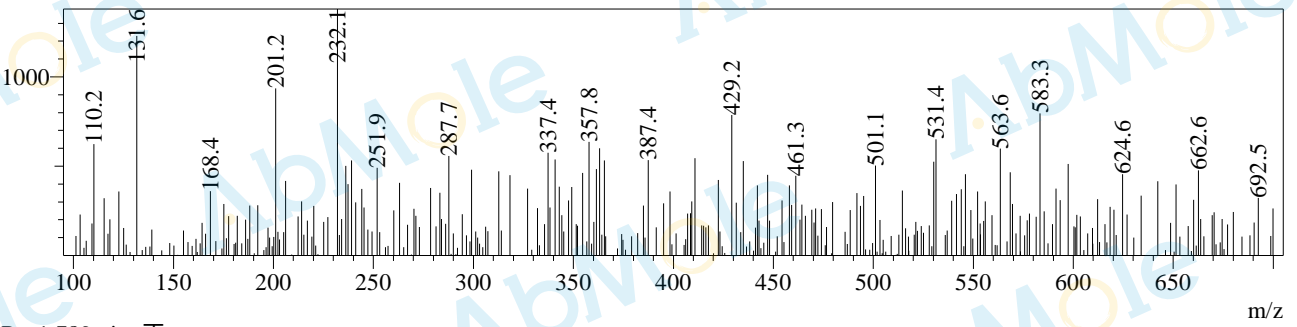
Rt=0.957min 正



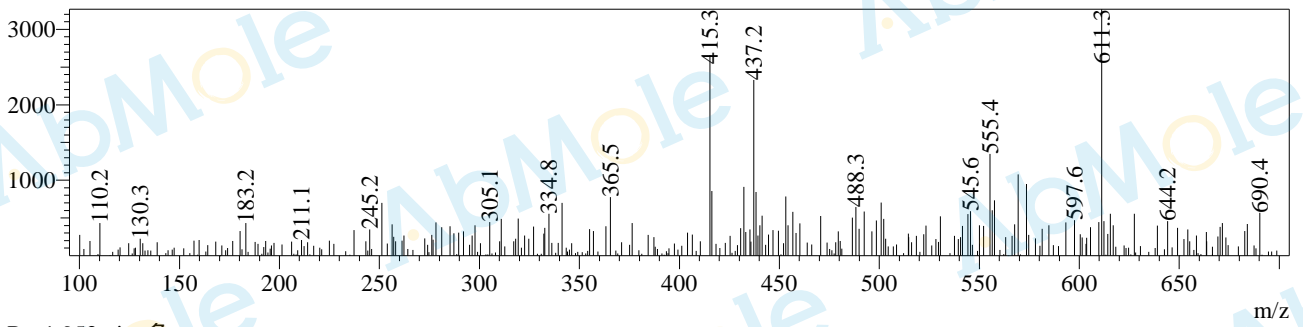
Rt=0.985min 负



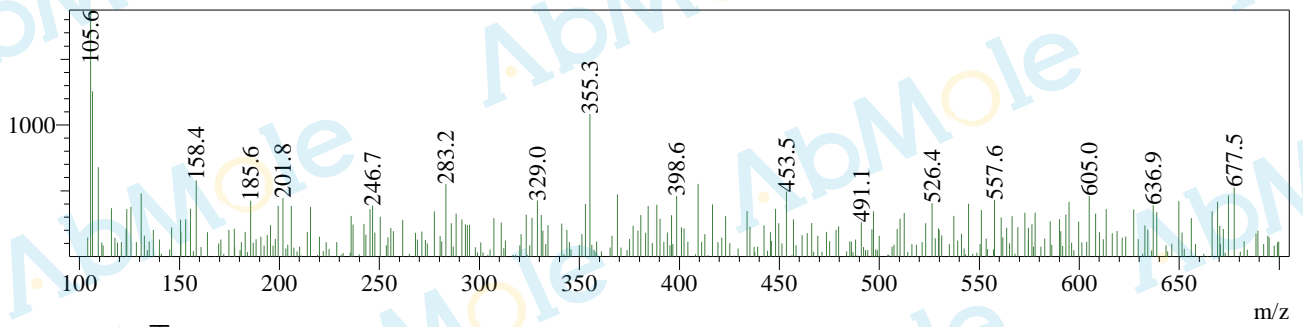
Rt=1.519min 正



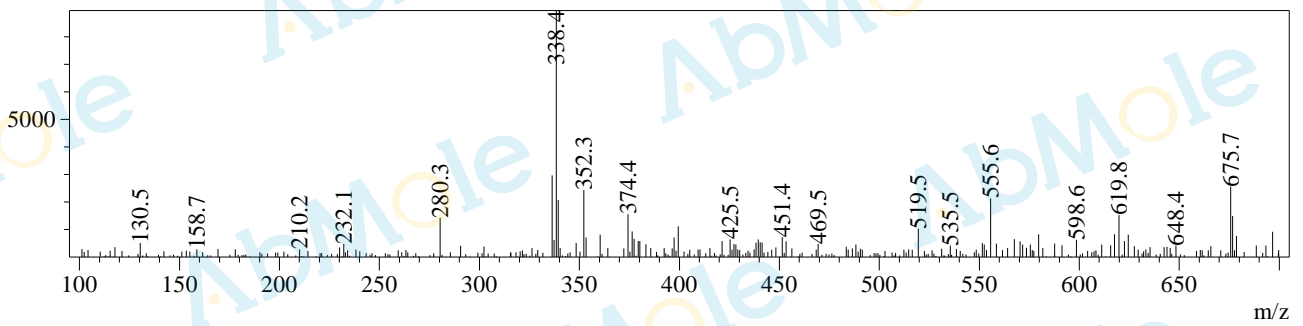
Rt=1.789min 正



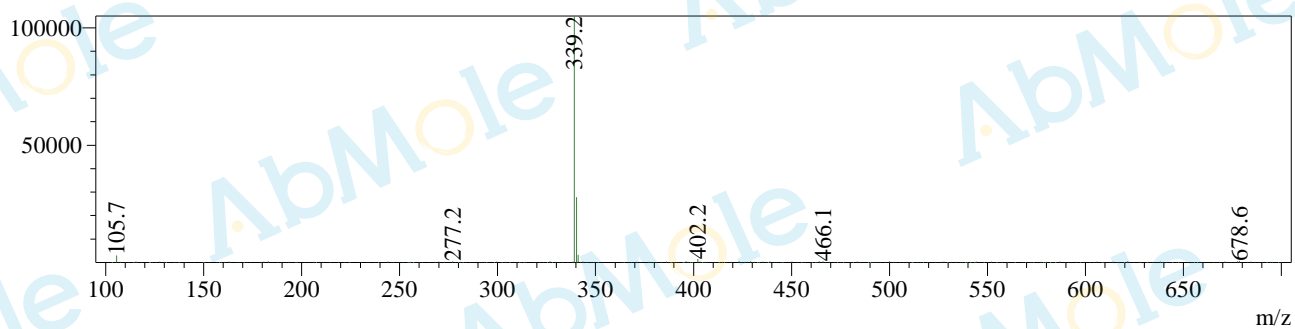
Rt=1.952min 负



Rt=2.217min 正



Rt=2.245min 负



Rt=2.425min 负

